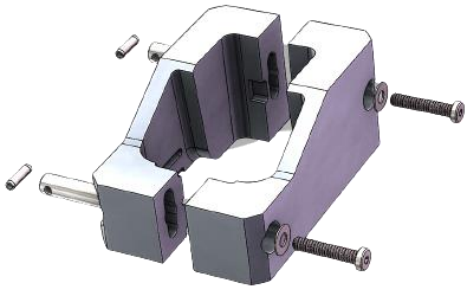
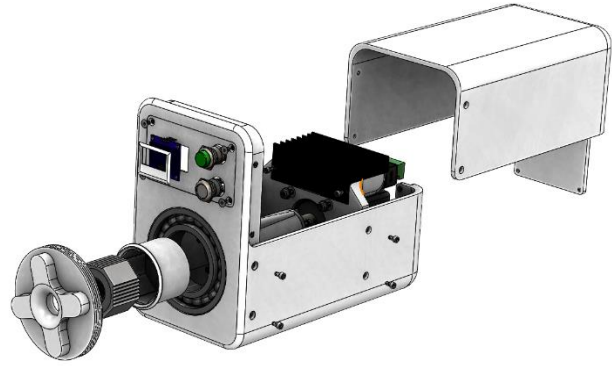


Cable Roughing Machine:

- Roughs the jacket of an industrial cable to promote adhesion
- Precise and consistent control for high volume applications
- Used design simulations to maximize the lifetime of consumable parts

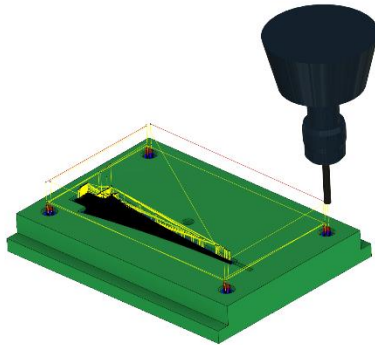
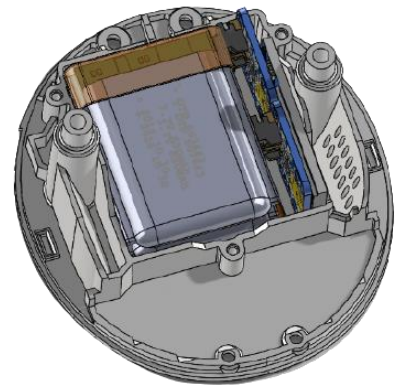


Adhesive Curing Clamps:

- Clamp for industrial connector to thermally cure adhesive
- Simple latching mechanism replacing long screws
- Passed simulated and physical testing for repeated heat cycles of 190°F

Medical Vaporizer Device:

- Reworked previous device design to provide for lithium ion battery and Bluetooth connectivity
- Created laser alignment test fixture for manufacturing quality



Intracranial Probe Sheath Mold Development:

- Created and manufactured molds for a sheath to protect intracranial probes
- Created new workflow for future moldmaking and CNC manufacturing projects
- Aluminum DMLS printing for small mechanical parts
- Biocompatible materials and manufacturing processes

